

H-PRO LED

Indoor LED highbay luminaire



GENERAL CHARACTERISTICS

Equivalent Power*	250, 400 W
Power supply	230 V _{AC} ±10%, 50/60 Hz 216 V _{DC} ±20%
Standard	EN 60598-1, EN 60598-2-1, EN 60598-2-22 (fundamental requirements), EN 62471 (Photobiological hazard)
Protection grade	IP66, IK09
Working temp.	SD Version: -30 °C ÷ +60 °C**** ED Version: -20 °C ÷ +40 °C
Mounting	ceiling, suspension, busbar trunking
Housing	Die-cast aluminium RAL 7040 white
Optic	Sheet metal with parabolic development in anti-iridescent, mirror finished, anodised aluminium, Wide, Concentrating, Ellipsoidal
Diffuser***	Prismatic toughened glass 4 mm thick
Driver	electronic, dimmable 0-10V (cos φ ≥ 0.95)
MTBF Control gear**	100 000 h
Luminous flux maintenance**	>60 000 h (L80B20)
Colour deviation	3 SDCM

* Equivalent power for comparison with metal halide fixtures

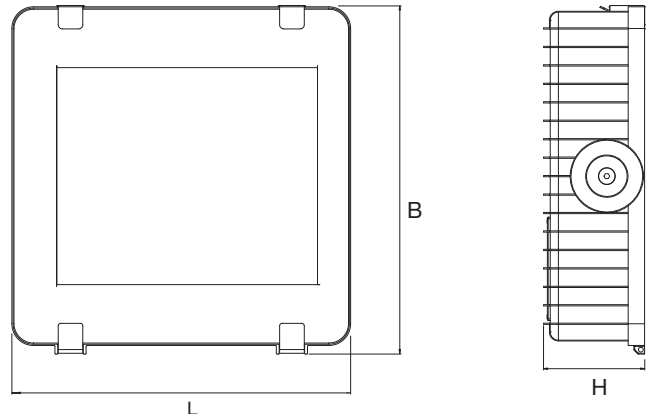
** At environmental reference temperature of 25 °C

*** Available on request polycarbonate optic diffuser

**** At highest working temperature thermal protection may reduce the output power.

The H-PRO LED is a fixture of the latest generation able to combine the advantages of the LED light source with state-of-the-art optic systems, as regards both performance and flexibility of application. The LED sources used, with very high efficiency, allow mounting at heights of more than 12 metres. The diffuser has an wide and uniform area of emission, allowing very low luminosity and therefore reduced glare with high visual comfort. The excellent mechanical characteristics (IP66-IK09) allow installation even in heavy-duty industrial environments. The fixture is available with three different optic modes: concentrating, wide and elliptical beam.

Unlike traditional industrial high bay fixtures, the H-PRO LED is characterized by very compact dimensions, especially the height, which make it the ideal solution for sheds where there are overhead cranes or other moving structures. The fixture is designed to resist magnetic disturbances typical of industrial environments (EN 61000-6-2). In the versions with dimming, to ensure maximum energy saving, self-adapting technology is used on the sensor integrated in the fixture, to automatically adjust the emission of light according to the reading of the natural light present on the work surface.



• Dimensions (mm) •			Weight kg
L	H	B	
425	121	413	7.7

Accessories

supplied

Order code	Description
-	ANTI-VANDAL SCREWS
418319000	CABLE GLAND M20 WITH VENTILATION VALVE

Accessories

supplied

Order code	Description
-	AUTODIMMER PHOTOSENSOR AND RADIO MODULE

Building automation to be ordered separately

Order code	Description
20102	BUILDING AUTOMATION CENTRAL UNIT
20124	BUILDING AUTOMATION CENTRAL UNIT WIFI
20104	2 INPUT INTERFACE – RADIO TRANSMITTER

Accessories to be ordered separately

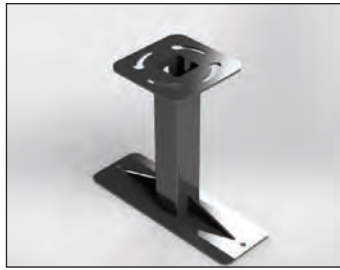
Order code	Description
12658	PROTECTIVE GRID
12659	ELECTRIFIED TRACK BRACKET
12663	HIGH BAY SUSPENSION CABLES
12664	CEILING BRACKET
99-0205	HIGH BAY SUSPENSION CHAINS (1 m)
99-0206	HIGH BAY SUSPENSION CHAINS (2 m)

ELECTRIFIED TRACK MOUNTING BRACKET



12659 to be ordered separately

CEILING MOUNTING BRACKET



12664 to be ordered separately

SUSPENDED MOUNTING



12663 to be ordered separately

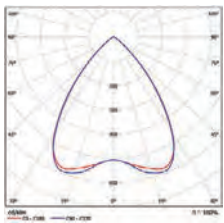
99-0205 to be ordered separately

99-0206 to be ordered separately

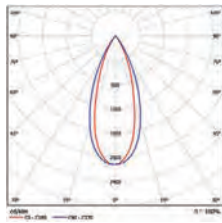
Efficiency and dimming

The increase in luminous efficacy (lm/W) and the useful life of the device may vary significantly according to the degree to which it is dimmed. Assuming an average level of 50% of the luminous flux, the following results are obtained with the H-PRO LED:

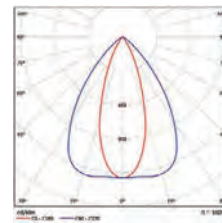
Dimming **50 %**
Device duration **+40 %**
Luminous efficiency **+10 %**



Wide optic



Concentrating optic



Elliptical optic

H-PRO LED

SmartDriver

Power W*	Order code	Description	Optic	Colour Temp. K	Colour rendering	Power consumption max. W	N°LEDs	Flux of LEDs lm (T _J =25°C)	Flux of fixture lm	lm/W	Energy Class	Packaging
250	40839	H-PRO RIF S 150W D SD	WIDE	4 000	>80	153	512	26 700	22 824	149	A+	1
250	40842	H-PRO RIF S 150W C SD	CONCENTRATING	4 000	>80	153	512	25 370	21 683	142	A+	1
250	40845	H-PRO RIF S 150W E SD	ELLIPTICAL	4 000	>80	153	512	25 900	22 140	145	A+	1
400	40848	H-PRO RIF S 240W D SD	WIDE	4 000	>80	246	512	45 460	38 853	158	A+	1
400	40851	H-PRO RIF S 240W C SD	CONCENTRATING	4 000	>80	246	512	44 470	38 005	154	A+	1
400	40854	H-PRO RIF S 240W E SD	ELLIPTICAL	4 000	>80	246	512	45 210	38 638	157	A+	1

DALI version on request.

H-PRO LED

Eco Driver

Power W*	Order code	Description	Optic	Colour Temp. K	Colour rendering	Power consumption max. W	N°LEDs	Flux of LEDs lm (T _J =25°C)	Flux of fixture lm	lm/W	Energy Class	Packaging
250	40821	H-PRO RIF S 150W D ADJUSTABLE	WIDE	4 000	>80	153	512	26 700	22 824	149	A+	1
250	40824	H-PRO RIF S 150W C ADJUSTABLE	CONCENTRATING	4 000	>80	153	512	25 370	21 683	142	A+	1
250	40827	H-PRO RIF S 150W E ADJUSTABLE	ELLIPTICAL	4 000	>80	153	512	25 900	22 140	145	A+	1
400	40830	H-PRO RIF S 240W D ADJUSTABLE	WIDE	4 000	>80	246	512	46 805	40 005	163	A+	1
400	40833	H-PRO RIF S 240W C ADJUSTABLE	CONCENTRATING	4 000	>80	246	512	44 470	38 005	155	A+	1
400	40836	H-PRO RIF S 240W E ADJUSTABLE	ELLIPTICAL	4 000	>80	246	512	45 400	38 805	158	A+	1

ADJUSTABLE VERSIONS

40821



40824



40827



40830



40833



40836



Factory setting: Step 4 = max. flux.